



Only 2 native fish are still found in Utah Lake. All the other fish species in Utah Lake were introduced as a food source or for sportfishing



June Sucker



Utah Sucker



Bonneville Cutthroat Trout



Least Chub



Bonneville Redside Shiner



Mottled Sculpin



Leatherside Chub



Utah Chub



Speckled Dace



Long Nosed Dace

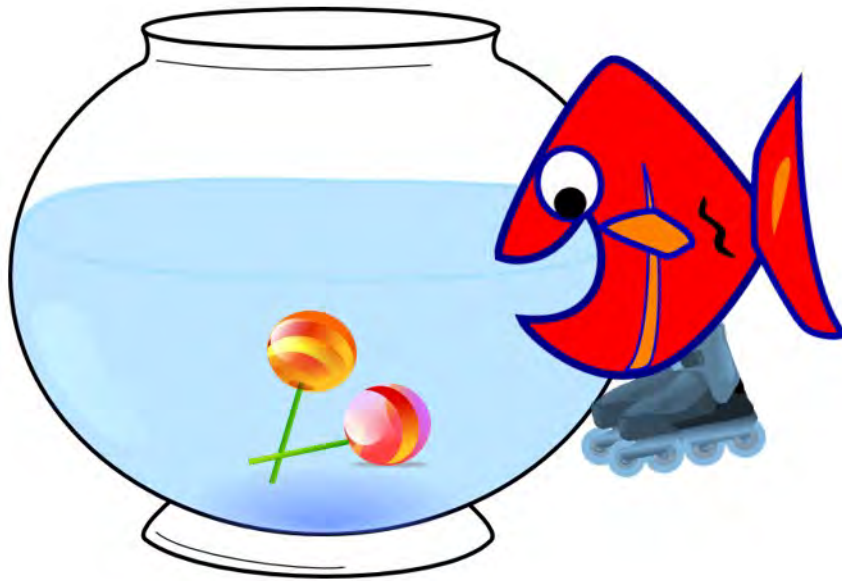


Mountain Whitefish



Mountain Sucker

The Challenge



Existing River:

- Cold, deep water
- Low productivity
- Limited cover from predators



Restored delta:

- Warmer, shallower water
- Higher productivity
- Abundant cover from predators

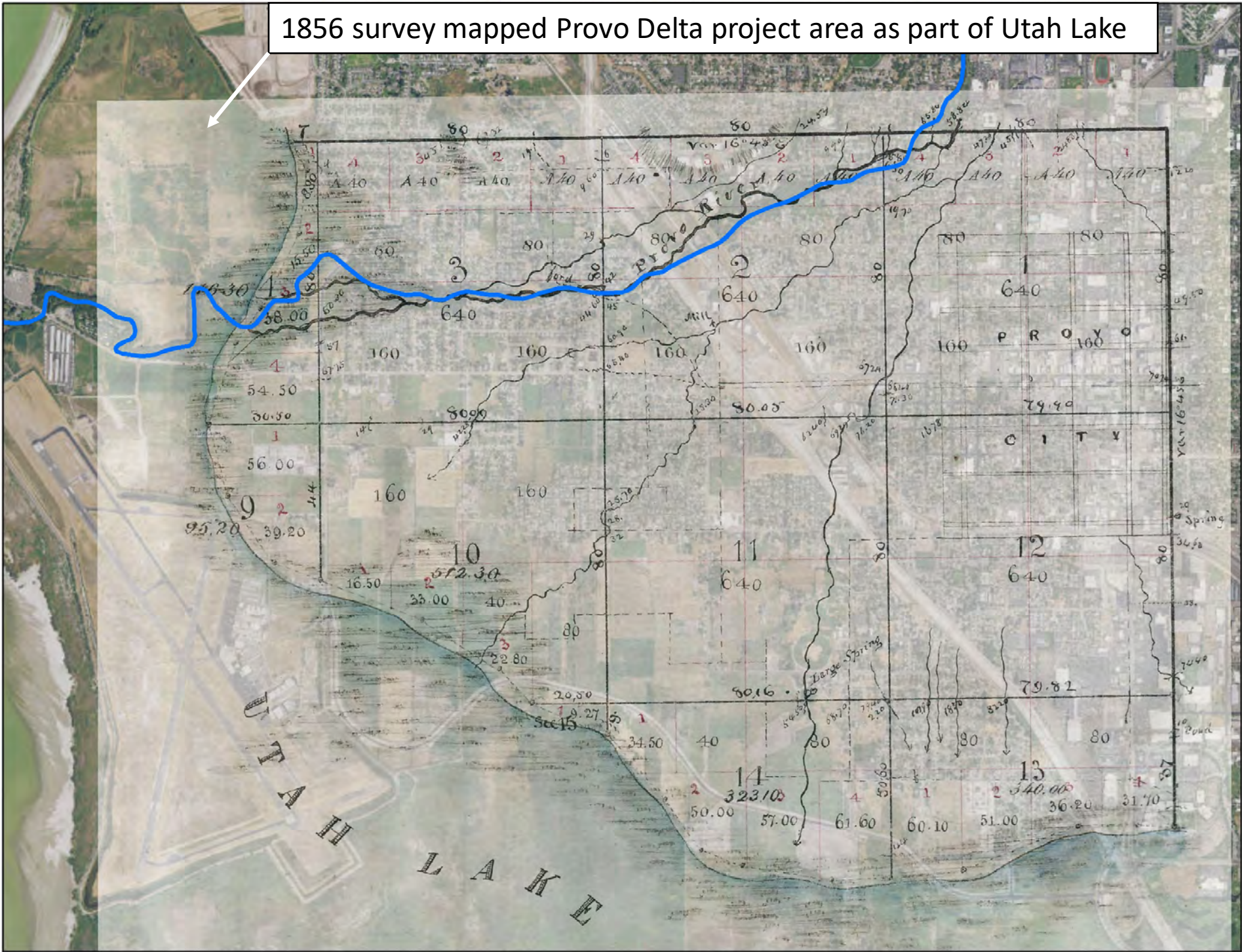
Provo River Channel

Project Boundary

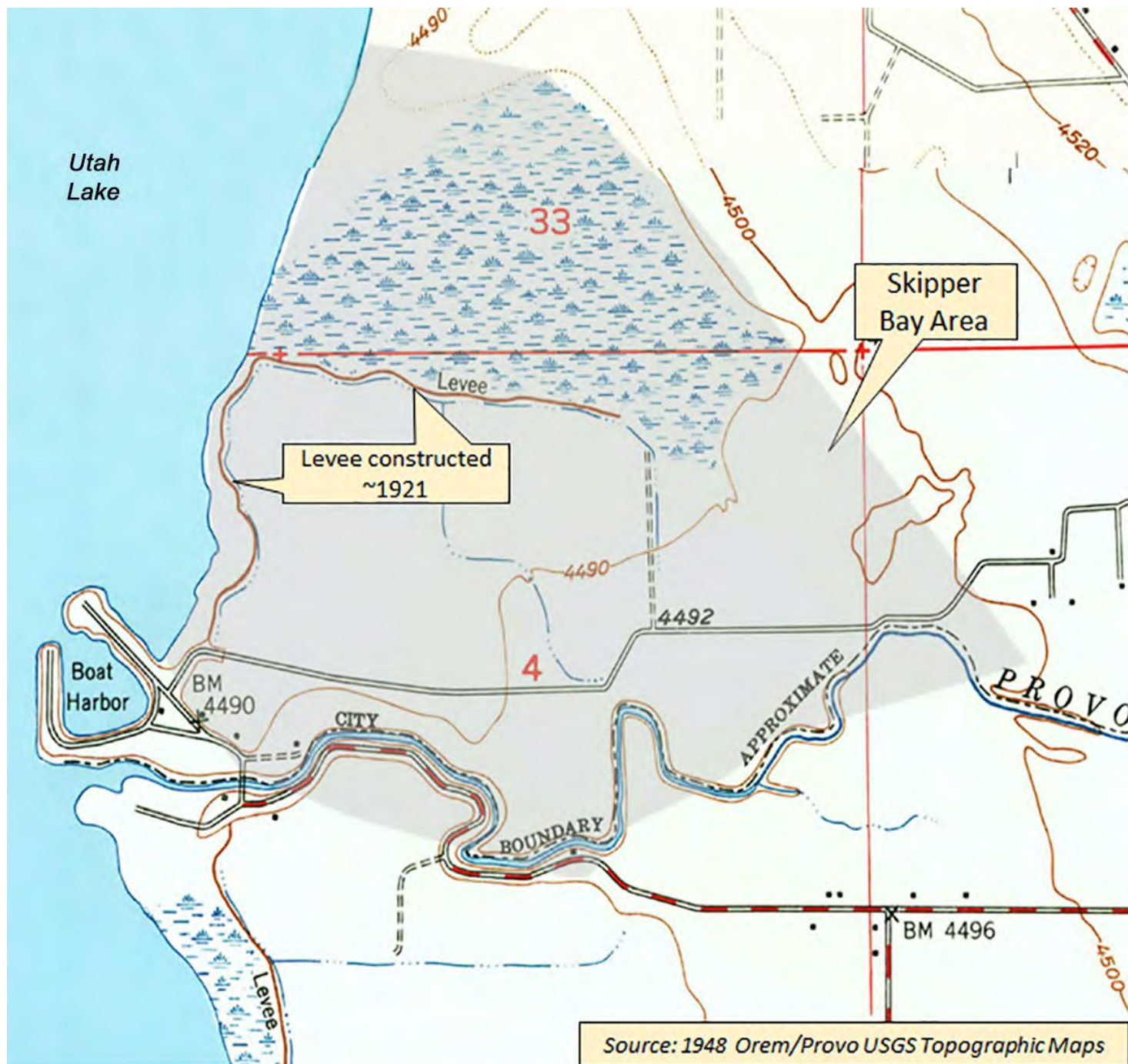
Utah Lake
Elevation
~ 4,488.5'
Feb 24, 2020



1856 survey mapped Provo Delta project area as part of Utah Lake

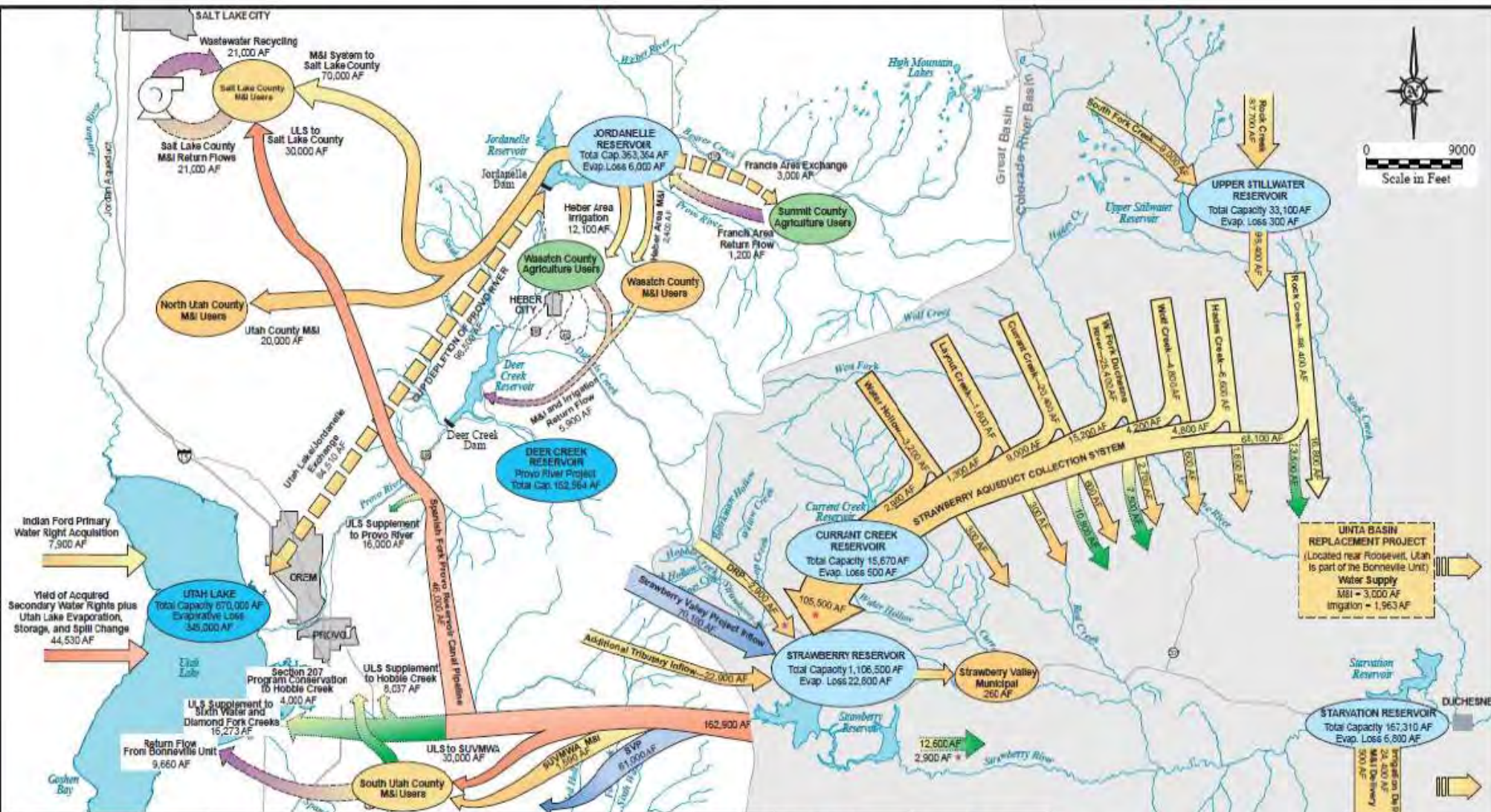


North half of dike was built ~1950s or 1960s (See full article in spring 2018 newsletter)



Source: 1948 Orem/Provo USGS Topographic Maps

THE Central Utah Project



Depletions to the Provo River	
Description of Depletion	Average Annual Acre-Feet
M&I Salt Lake County	70,000
M&I North Utah County	20,000
Francia Area Agriculture	3,000
Wasatch County Agriculture	9,200
Daniel Replacement Project	2,900
M&I Wasatch County	2,400
Jordanelle Evaporation & Storage	8,000
Francia Area Return	-1,200
Wasatch County Agric. Return	-4,400
Wasatch County M&I Return	-1,500
Indian Ford Utah Lake Rights	-7,900
Total	98,500

Depletions to Utah Lake	
Description of Depletion	Average Annual Acre-Feet
Provo River Depletion	98,500
Strawberry to Supplement Sixth Water and Diamond Fork	-18,273
Strawberry to Supplement Hobble Creek	-12,037
Strawberry to Supplement Provo River	-18,000
North Utah County M&I Return	0
So Utah Return	-9,886
Yield of Utah Lake Rights, Plus Utah Lake Evaporation, Storage & Spill Change	-44,530
Total	0

Depletions to the Colorado River	
Description of Depletion	Average Annual Acre-Feet
Strawberry Collection System Operation	-101,900
- Bonneville Unit water released to the Basin	-260
- Strawberry Valley M&I Use	-260
- Strawberry Reservoir evaporation (B&I park) (1)	-17,700
- Upper Stillwater Reservoir evaporation	-400
- Current Creek Reservoir evaporation	-300
Starvation Collection System Operation	-12,200
- Duchesne River area irrigation	-12,200
- Duchesne River area M&I Use	-250
- Starvation Reservoir evaporation	-6,600
Units Basin Replacement Project	-1,500
- Roosevelt area M&I Use	-1,500
- Lost to area irrigation Use	-481
Offsetting gain from Daniel Replacement Project	12,900
Total	139,491

Strawberry Reservoir		
Project	Inflow	Outflow to:
Strawberry Valley Project	70,100 AF	Great Basin
Central Utah Project	128,400 AF	61,000 AF
Daniel Replacement Project	2,900 AF	101,900 AF
		D.A.F.
Total	201,400 AF	162,900 AF
Project		Outflow to:
Strawberry Valley M&I		Units Basin
Daniel Replacement Project		12,600 AF
		2,900 AF
Total		15,760 AF

Notes:
BONNEVILLE UNIT
 CUP Transbasin diversion 101,900 AF
 AF = acre-feet

Water deliveries and spills
 Fishery flows
 Return flows

* Includes 4,000 AF Strawberry Valley Project Water
 * Wasatch County Water Efficiency Project and Daniel Replacement Project

UTAH LAKE DRAINAGE BASIN WATER DELIVERY SYSTEM DISTRIBUTION OF BONNEVILLE UNIT WATER
 FIGURE 2-1