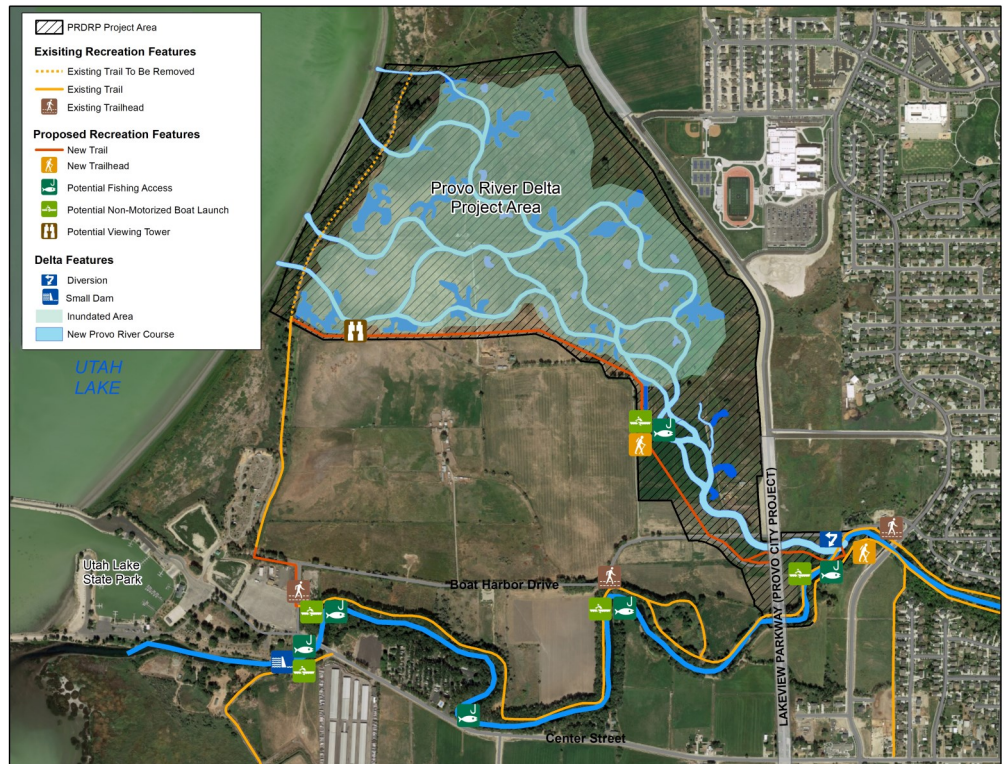


## Have you heard about the Provo River Delta Restoration Project?

The Provo River Delta Restoration Project will divert the majority of the lower Provo River's flow north of its current location into a constructed system of braided waterways and wetlands. Utah Lake will be allowed to expand eastward to more closely approach its historic shoreline, creating habitat essential for survival of June sucker. New trails, parking areas, and recreation amenities will be constructed.



## What will happen to the existing river channel?

The existing channel will remain and will receive a guaranteed minimum flow of water year-round. A small dam will be built near Utah Lake to maintain a relatively constant water elevation and the area will be managed as a community fishery. Other improvements will include non-motorized boat launches and fishing access points.

## When will these changes happen?

Construction of delta channels and ponds began in 2020 and will continue through 2022. We plan to divert the Provo River into the restored delta between November 2022 and January 2023. Recreation features will be constructed in 2023 and we expect the project will be fully open to the public, including for fishing, in 2024.

## What is a June Sucker?



*Young June sucker. Adults grow to 24 inches.*

The June sucker is a native fish that naturally occurs only in Utah Lake. In the springtime, adults migrate up Provo River to spawn. June sucker are listed as threatened under the federal Endangered Species Act. It is against the law to harass or harvest June sucker. If you catch a June sucker please release it back to the water immediately! Visit <https://www.junesuckerrecovery.org/> for more info.

## How will the Provo Delta Project affect fishing?



The Project will create a large, new, publicly-accessible fishing area while also maintaining fishing opportunities on the existing channel. We expect that the 260-acre restored delta area will provide a similar fishing experience as Provo Bay, attracting sportfish like Bluegill, Channel Catfish, Largemouth Bass and White Bass. The existing river channel will remain and will be managed as a community fishery. It is expected to support similar sportfish and may be seasonally or supplementally stocked.

## How will the Provo Delta Project affect boating?



New non-motorized boat launches will provide convenient access for kayaks, canoes, and paddle-boards (see map on reverse). Portage ramps at the diversion structure and small dam will maintain the connection between Utah Lake and the existing channel. Non-motorized boaters will be able explore ~200 acres of marshy channels and ponds in the restored delta — an area that used to be private ranch land.

## How will the Provo Delta Project affect trails?



The existing Provo River Trail will remain and will cross the new delta channel via a new pedestrian bridge. The north half of the existing Skipper Bay trail will be realigned and extended along the south boundary of the delta, connecting to existing trails to create a loop opportunity (see map on reverse). New trailhead parking will be provided at the delta and at the new Delta Gateway Park to be built near the diversion structure.

## Schedule

Project construction will affect recreation access on the existing lower Provo River in late 2022 into 2023 while the diversion and small downstream dam are being built. We expect the new Provo Delta to open to the public in 2024.



## Second Saturday Site Tours

We are offering Provo Delta Project tours to the public on the second Saturdays of the month between now and October, 2022. Group size is limited – advance sign-up required. Sign up on-line here [www.provriverdelta.us/contact-us](http://www.provriverdelta.us/contact-us) or by texting 801-560-1790.



Want to know more about the project?  
Visit [www.provriverdelta.us](http://www.provriverdelta.us)

